



Living Made Easy Regulated Training

Accredited Health & Wellbeing Courses
Supported by Shaw Trust

shawtrust.org.uk



“This training has improved my knowledge and skills. I can confidently assess for minor equipment and adaptations and refer to my OT colleagues where necessary. Thanks for the wonderful training –it was smooth and tussle-free.”

Contents

About our training	4
Training courses	6
Trusted Assessor Level 3 and 4	7
Paediatric Trusted Assessor	8
Trusted Assessor refresher and People handling	9
People handling refresher and All Wales manual handling	10
What our service users say about us	11
Contact us	12

About our training

For more than two decades, Living Made Easy has been providing accredited Continuous Professional Development (CPD) courses delivered by expert trainers who have skills, knowledge and experience in their chosen field. As a founding member of the Trusted Assessor framework, Living Made Easy is a leading industry expert in training professionals. We offer a range of accredited courses via OCN and CPD.

Our courses are designed to facilitate the delivery of quality, person-centred care within the framework of best practices. Specialising in practical, hands-on training scenarios that incorporate a broad range of equipment to support personalised, independent living. We have provided training to a wide range of organisations from health practitioners to local authorities to retailers. Our training offer is suitable for all types of organisations and their employees.

Delivered online, face-to-face or as a blended approach to best suit your needs.

Reflective practice

Alongside our training courses we also offer commercial reflective practice to organisations. This is delivered by our team of highly skilled clinical practitioners and supports attendees in using reflection to capture new knowledge after a project, situation or task. Reflective practice allows staff to continuously learn and improve and build reflection into workflow. Through training in reflective practice, it allows development in practice, understanding self, how to adapt and finally to be more aware of personal wellbeing. Prices and further information are available upon request.

Bespoke offer

We can design and deliver bespoke training based on your organisational needs and requirements. Please contact us to discuss your requirements.



Great course. It has given me a lot more knowledge that I didn't know previously."



Training Courses



Trusted Assessor level 1: Advising and referring for independence at home to be more aware of personal wellbeing.

A knowledge based CPD accredited course which is suitable for anyone working in environments who may be asked about or support with disability equipment. This course is suitable for those starting out in Health and Social Care or beginning their Trusted Assessor career path.

The course covers:

- Understanding conditions and the impact on the ability to function.
- Understanding different roles within Health and Social Care.
- Understanding referral pathways for equipment and adaptations.
- Knowing the range of disability equipment available and their purpose.
- Knowing how to provide a quality customer experience.
- Understanding the role of the Trusted Advisor.

Duration: One day.

Delivery method: Online or face-to-face.



Trusted Assessor level 2: Trusted Installer

A CPD accredited course which is ideal for staff needing to adjust, fit and demonstrate equipment or minor adaptations that have been issued, or review and adjust equipment already being used.

The course covers:

- Understanding how daily living equipment can assist people with functional difficulties to live independently.
- Understanding safety and risk factors with the prescription of basic equipment.
- How to measure for basic daily living equipment.
- Understanding how to review and adjust equipment and demonstrate the use of basic equipment.
- Understanding when to refer service users to other services.
- Understanding the role of the trusted assessor at level two.

Duration: One day.

Delivery method: Face-to-face.



Trusted Assessor level 3: Assessing for minor adaptations

An OCN accredited course that once complete gives the learner the ability to assess customers for basic equipment and adaptation needs.

The course covers:

- Assessing client needs and demonstrating use of basic equipment to enable independent living.
- Knowledge of equipment and techniques available to assist with purposeful occupation.
- Safety and reducing risk factors with the prescription and use of equipment.
- Recommending, measuring for and fitting equipment.
- Knowing when and how to refer service users onto another service.
- The importance of reviewing and promoting best practice.

Duration: Three months to complete, which includes 10 hours of e-learning and then either a six hour face to face session, or four-hour webinar session followed by a module workbook (for the online course a video assignment also needs to be submitted) which must be completed within three weeks of the teaching session.

Delivery method: Online or blended. The blended learning course requires learners to complete e-learning, and attend a single trainer led face-to-face practical day. The virtual course comprises of the same content as the blended option, but the face-to-face day is replaced by a trainer-led online webinar.



Trusted Assessor level 4: Assessing and adapting the home

The level four course which is also OCN accredited enables the Trusted Assessor to identify a need for major adaptations, assess, measure for, and prescribe major adaptations and apply for Disabled Facilities Grant (DFG) funding for the adaptations.

The course covers:

- The purpose of the DFG –benefits and limitations.
- How to complete a robust risk assessment for various environments/factors.
- Identifying and justifying the need for daily living equipment and adaptations.
- Understanding environmental factors that impact on installing adaptations.
- Measuring for major adaptations.
- When to refer clients back to Occupational Therapy services.

Duration: Three months.

Delivery method: Blended (one e-learning day, one face-to-face trainer led practical day). Learners are required to complete a written assignment before receiving accreditation.



Paediatric Trusted Assessor

This course has been designed for those who support and assess the younger generation. This is a dual qualification, on completion the learner will receive a CPD accredited Paediatric Trusted Assessor qualification, along with an OCN Trusted Assessor level four qualification.

The course covers:

- Legislation relating to Paediatric Trusted Assessor and the Trusted Assessor model.
- Knowledge of how to identify the need for, assess and measure adaptations.
- Learning the correct methods on how to assist children to move.
- How to undertake a risk assessment.
- How to apply for a 'disability funding grant'.

Duration: Between one to three months.

Delivery method: Blended (online e-learning, followed by two face-to-face practical days).



Trusted Assessor: Assessing for telecare solutions

This course is OCN accredited and is for those who wish to expand their knowledge into telecare or those who are currently assessing people for telecare equipment and require a relevant qualification.

The course covers:

- Understanding how to mitigate risk through assessment.
- The ethical implications, policy and legislation of telecare.
- The correct way to monitor and manage telecare equipment.
- Implications of the shift from analogue to digital systems.
- Strengths, weaknesses and benefits to the customer.
- Occupational Therapist assessment referral requirements.

Duration: 25 guided learning hours. Three months to complete.

Delivery method: Self-directed e-learning, with completed module workbook marked and assessed before certification.



Trusted Assessor refresher

Reinforce the theoretical principles of assessment with this recap on the trusted assessor assessment model and how to apply it in practice.

The course covers:

- A recap of the legislation and measuring techniques.
- Information gathering.
- Balancing safety, independence and risk.
- Risk perception.
- Equipment including bed and toilet raisers, perching stools, rails for stairs, external rails etc.

Duration: Learners have up to three months to complete.

Delivery method: Self-directed e-learning or Face-to-Face over 5 hours.



People handling

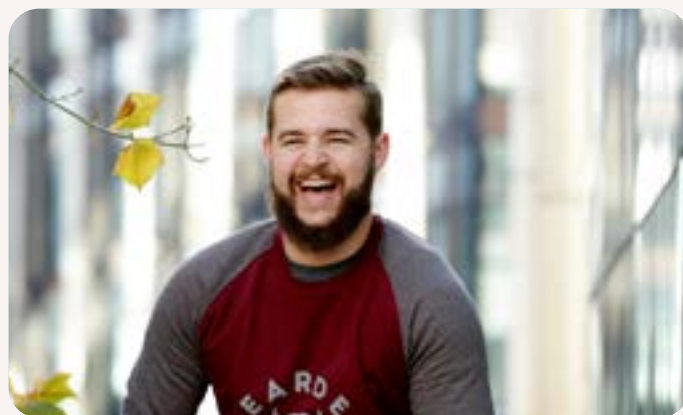
We deliver practical moving and handling courses that are CPD accredited. This includes demonstrating the use of equipment you use within your service whilst providing underpinning knowledge.

The course covers:

- Knowing how legislation relating to moving and handling applies to job roles.
- The principals of safe handling.
- How to risk assess for moving and handling.
- Demonstrate the correct movement of an inanimate object, the correct way to assist with moving and the correct way to use equipment.

Duration: One day.

Delivery method: Face-to-face.



People handling refresher

This course is designed for professionals that need to refresh their skills. This includes any staff member who supports others with their mobility needs in a Health and Social Care.

The course covers:

- Legislation relating to moving and handling.
- The principals of safe handling.
- How to risk assess for moving and handling.
- The correct movement of an inanimate object.
- The correct way to assist an individual with moving.
- The correct use of a range of equipment.

Duration: One day.

Delivery method: Face-to-face.



All Wales manual handling passport

Originally developed in 2003 by Health and Safety professionals to ensure high standards and consistency of manual handling within the NHS. The scheme has now been adopted as the standard for manual handling in Wales. It enables carers to transfer their skills in moving and handling from one organisation to another. The practical moving and handling courses can be delivered either over one day or two and organisations can choose which option they would prefer when booking. These are delivered at your venue and upon completion learners receive a certificate of attendance.

The course covers:

- Legislation.
- Risk assessment.
- The impact manual handling can have on the spine.
- Practical demonstration of correct techniques.
- The correct way to use equipment.
- How to support people with poor mental health and managing your own wellbeing when supporting others.

Note: This course is only applicable to organisations/institutions based in Wales. The practical equipment (beds and hoists) is essential to training and will need to be made available for delegate use during this course at your venue.

Duration: One or two days.

Delivery method: Face-to-face.

What our service users say about us:

“This course has opened many doors for me in my career as a Reablement Assessor. Taking part has given me confidence to support individuals that need adaptations so they can live independently in their own home, feeling safe and comfortable. I am proud that my job allows me to make a difference to their lives. The tutor was very professional, understood my frustration when stuck and guided me to find the correct answer. I appreciate it very much.”

“The People handling training with Shaw Trust was great and the trainer was fabulous-very organised, very engaging and easy to listen to. Very knowledgeable and adequate time given to ask questions which were answered and allowed engaging discussion. Overall, a great practical session as well! Staff are very happy.”

“Greater understanding on role and responsibilities of being a trusted assessor.”

Follow us on our social channels



Shaw Trust



Shaw Trust



Shaw Trust

Scan the QR code to visit our website for more details on our training courses and packages and details on how to book.

If you would like to discuss bespoke training packages, then contact us directly for more information.

Email: training@shaw-trust.org.uk

Phone: 0300 123 3084

Website: shawtrust.org.uk/training

