



meywalk® 4

The Dynamic Walker

User Handbook



SYMMETRIKIT
POSTURAL CARE

HN a division of The Helping Hand Company

CONTENTS

<i>Introduction</i>	3
<i>CE marking and labels</i>	3
<i>Safety precautions</i>	4
<i>Prior to first use</i>	5
<i>Meywalk®4 part names</i>	6
<i>Warranty</i>	7
<i>Assembly</i>	8
<i>Adjustments</i>	10
<i>Cleaning and maintenance</i>	18
<i>Recycling</i>	18
<i>Disposal</i>	18
<i>Pre-assessment</i>	20
<i>Technical specifications</i>	21
<i>Meywalk®4 accessories</i>	22

INTRODUCTION

Meywalk® 4 Micro, Mini, Small, Medium and Large are primarily designed for young children, youths and adults who have difficulty walking without support. The user-friendly Meywalk®4 is designed for indoor and outdoor use. The maximum permitted body weight of the user is: Micro - 60kg, Mini - 80 kg, Small - 100 kg and Medium and Large - 130 kg.

With the Meywalk®4 you have purchased one of the best walkers available. A higher standard is reached due to its unique design and high-quality materials. You will be impressed by the multiple functions:

- Meywalk®4 follows individual body movements and walking patterns.
- Helps the user keep his/her torso upright and makes the user feel safe.
- The handlebar supports the user's arms and reduces the strain on them.
- The seat can be lowered when getting in and out.
- The rear stop helps with keeping the user comfortably seated.
- The integrated springs and dynamic seat support the walking function.

CE marking and labels

The type and manufacturer label is placed on the bottom frame. Labels must always be readable. Replace any unreadable or missing labels as soon as possible. The type and manufacturer label is important for the identification of the product and may not be removed.

The Meywalk®4 is CE marked. This guarantees that the Meywalk®4 is in compliance with all relevant safety requirements specified in Council Directive 93/42/EEC on medical devices. The Meywalk®4 was tested by Berlin Cert, Prüf- und Zertifizierstelle für Medizinprodukte GmbH, at the Berlin Technical University.

SAFETY PRECAUTIONS

- **Never leave the user in Meywalk®4 unattended!** Meywalk®4 is a therapy product and should only be used as such!
- The spring system of Meywalk®4 may involve a risk of the walking aid toppling over if used by a very restless user.
- Meywalk®4 rolls very easily and you should always consider potential dangers that the user may get access to.
- Always hold the tilt bar securely when a user is being lifted or lowered. Especially when opening the tilt bar to lower the user, you must be prepared for the upward force which gradually increases as the tilt bar rises.
- Never let go of the tilt bar in the middle of a lifting or lowering operation, even if taken by surprise by the heavy weight loading.
- Be aware of the higher risk of squeezing your fingers when adjusting the walker.
- If fittings are removed, open tube ends may be revealed. These may have sharp inner edges and may be dangerous for probing fingers. However, Meywalk®4 and its accessories are designed to avoid open ends! If a situation with open tube ends should ever arise, it is recommended that they are closed off with plastic plugs.
- Polyurethane foam and foam tubing may not be consumed.
- Please be aware that the upholstery heats up if placed in direct sun light. This can cause skin damage if the upholstery is touched. Therefore, cover up the upholstery parts or protect the walker from direct sun light.
- The walker should only be used on level and firm flooring. Avoid loose surfaces such as gravel, sand or foliage. Be aware of unevenness and holes in the flooring as there is a risk of toppling over or getting stuck. Be especially careful on wet or icy surfaces as the risk of slipping is considerably higher.

-
- Check that all parts are securely fastened before using the walker.
 - Do not use high-pressure cleaning tools or caustic chemicals when cleaning the walker.
 - Unlike previous generations of Meywalk® Walkers, the Meywalk®4 is now equipped with drag brakes, non-reverse brakes and front wheel swivel-locks as standard.
 - **The product is not made with natural rubber latex.**

Prior to first use

Meywalk®4 is supplied almost fully assembled. Please check that the package contains the following parts:

- Bottom frame with wheels and brakes.
- Top part with seat and trunk support.
- A set of springs according to the user's body weight.
- Accessories as ordered.



Meywalk® 4 parts



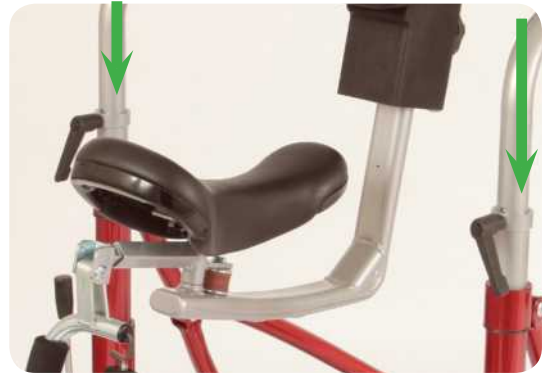
WARRANTY

Warranty is granted on all defects that are proven to be caused by material or manufacturer fault. The warranty period is 24 months from the time of dispatch readiness alternatively time of delivery. The warranty does not cover any damage due to normal wear and tear, intentional, negligent or inexpedient handling or use. This also applies if using unsuitable detergents and lubricants.

ASSEMBLY

Joining the top part and bottom frame

Place the top part in the tubes on the bottom frame. Remember to position the top part so that the handlebar points in the direction of the swivelling front wheels.



Spring loading

The two springs inside the tubes can be changed to obtain harder or softer suspension. As a guideline, the springs should be fully compressed by the body weight of the user. There are seven different spring hardness levels corresponding to the following body weight:



	<i>Orange</i>	<i>10 - 15 kg</i>
	<i>Purple</i>	<i>15 - 20 kg</i>
	<i>White</i>	<i>20 - 50 kg</i>
	<i>Yellow</i>	<i>45 - 65 kg</i>
	<i>Blue</i>	<i>65 - 80 kg</i>
	<i>Red</i>	<i>80 - 100 kg</i>
	<i>Silver</i>	<i>100 - 130 kg</i>

The springs can easily be interchanged. Grab and open the swing bar so that the frame is lowered. The tube ends are closed with a lid - open the lids to remove the springs. To open the lid push up and turn clockwise before pulling the lid down and off. After removal of the old springs the new ones can be inserted into the tubes. Now the lid can be fastened again by repeating the steps above in reverse order. On the Model Mini, you have to lift the top part, then you can easily change the springs.



ADJUSTMENTS

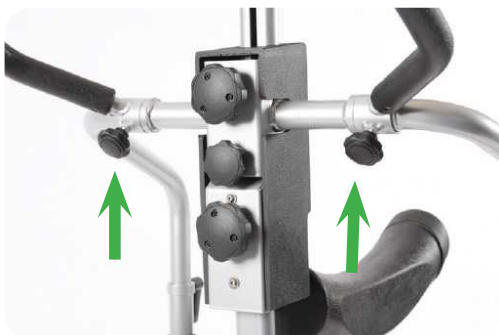
Stanchions

Warning! Do not carry out this adjustment while a user is placed in Meywalk®4. The height of Meywalk®4 is adjusted by way of the black spanner grips. Loosen the spanner grips on both sides and adjust the frame to the desired height. Fasten the spanner grips firmly. It is important that both sides are adjusted to an equal height. You can check this by way of the indentations on the tubes.



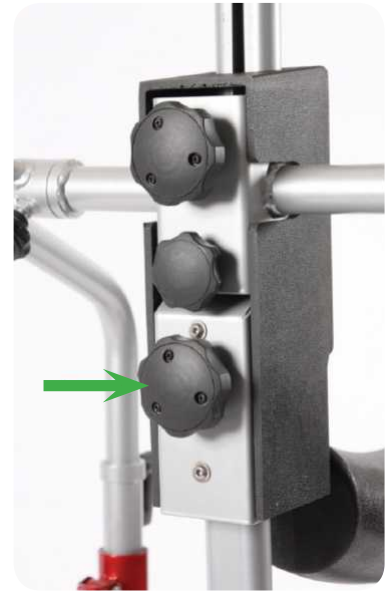
Handlebar

The angle of the handlebar can be adjusted in three steps. Loosen the two thumb screws and turn the handlebar to the desired position. Fasten the thumb screws lightly. If the handlebar is seated correctly it should not be possible to turn it with the thumb screws lightly fastened. When you have made sure that the handlebar is placed correctly you may tightly fasten the thumb screws.



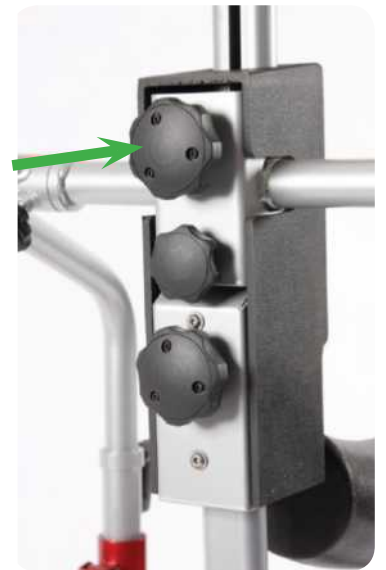
Seat

Warning! Do not carry out this adjustment while a user is placed in Meywalk®4. Adjust the seat height according to the length of the user's legs. Turn the **lower thumb screw** located at the front of Meywalk®4. The thumb screw features a "child lock" which is released by simultaneously pressing and turning. When released, the seat can be adjusted up or down. Position the seat at the correct height. Hold your hand under the seat bar bottom to make the seat slide easily up and down. Re-tighten the thumb screw when the desired height has been found.



Trunk support height

Adjust the trunk support according to the individual user's height. Turn the **upper thumb screw** located at the front of Meywalk®4. The thumb screw features a "child lock" which is released by simultaneously pressing and turning. When released, the trunk support can be adjusted up or down until the correct height has been found. Re-tighten the thumb screw.



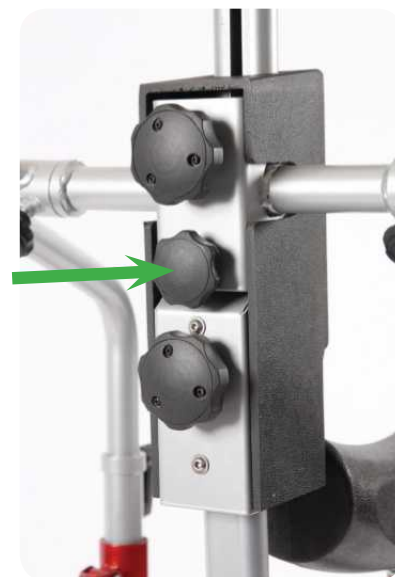
Trunk support replacement

Warning! Do not carry out this adjustment while a user is placed in Meywalk®4. For trunk support replacement, loosen the two Allen screws in front of the support. The two screws fit all trunk supports. The trunk support is available in five variants: Circumference 70, 90, 105, 120 and 130 cm.



Tilt function

Warning! Do not carry out this adjustment while a user is placed in Meywalk®4. By means of the **tilt function** the user's posture can be changed. Turn the **middle thumb screw** to tilt the support. The thumb screw is located at the front of Meywalk®4. While turning the screw, you can change the angle of the trunk support and seat up to 15°. The tilt function is continuously adjustable.



Getting in and out

Featuring a unique lifting and lowering system Meywalk®4 has made it easier for the user to get in and out. Grab the front of the swing bar with both hands and tip it up. This way the seat will be lowered approx. 11 cm for Small, 13 cm for Medium and 22 cm for Large. When the user has been seated, close the trunk support and pull up the rear stop. The seat is lifted by pushing down the swing bar until it locks with an audible click. The integrated gearing in the lifting and lowering system means that the downward pressure need only be about one third of the user's weight.

Rear stop

The rear stop should always be closed in the upright position when there is a user in Meywalk®4. Pull the rear stop backwards out of the seat and turn it upwards. Now you can push it down into the locked position. Repeat the procedure in reverse order to open the rear stop again. The rear stop behind the seat can be adjusted in depth. First lift up the rear stop and tilt it backwards. This reveals an Allen screw inside the U-profile. When the Allen screw is loosened, the rear stop can be slid forwards or backwards in the external tube. After adjustment, re-tighten the Allen screw.



Trunk support

To open the trunk support push the two padded tube pieces inwards and turn down. To close the trunk support push the tube pieces inwards and turn up to the locked position.



Brakes

The brakes are parking brakes that work by directly blocking the rear wheels with a braking pulley pressing against the tyre. To brake the walking aid, pull the brake levers away from the frame until they come to a definite stop. In this position the brakes are self-locking and it should not be possible to push the walker. The brakes are released by pushing the brake levers back towards the frame.



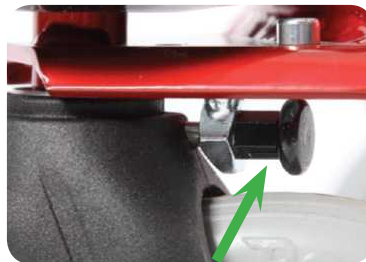
Drag brakes

The drag brakes work by the roller at the back pressing against the tyre. First loosen the nut on the Allen screw. Then turn the Allen screw to press the roller against the tyre. Tighten the nut in the opposite direction. Use a method of trial and error to find the correct pressure against the tyre. Test the drag brake function.



Wheel swivel / locks

To activate or de-activate the swivel locks pull and turn the pin locks 90°.



Front wheel swivel lock location



Rear wheel swivel lock location

Non-reverse brake

The non-reverse brake works by the grooved side pressing against the tyre preventing the wheel from going backwards. The non-reverse brake can be engaged / disengaged through the snap lock on the upper side of the brake housing. Finally test the function of the non-reverse brake.



Anti-tip support

Anti-tip supports are mounted on each side by first removing the bolts fixing the wheels. Use a 6mm Allen key. Place the anti-tip support against the outside of the rear fork of Meywalk®4 so that they fall into place in the two rear fork recesses. Screw bolts on both sides back on. Re-tighten firmly.



Leg divider

Fasten the leg divider under the seat bar with the two screws. The leg divider is height-adjustable. Loosen the screw at the front of the central tube. Adjust the leg divider to the desired height and re-tighten the screw firmly.



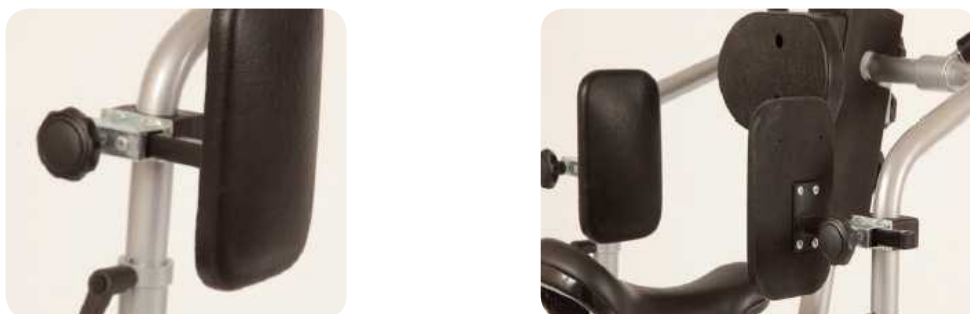
Trunk pad

The trunk pad is mounted on the black polyurethane shell of the center box. First remove the screws and washers from the shell. Then mount the trunk pad using the screws that came with the trunk pad.



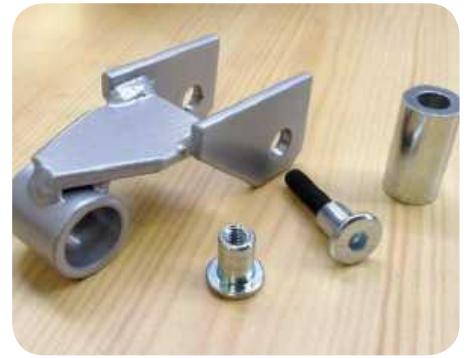
Hip pads

The hip-/side pads are to be mounted on the uprights. Fit the two pipe sections around the stanchion, tighten them together using the two screws. The hip-/side pads can be adjusted in or out of the seat by loosening the thumbscrew. Tighten the thumbscrew again after adjustment.



Height reductions set

Each reduction set consists of 1 pair of 4 units – 2 x special fittings, 2 x threaded rod, 2 x bushing and 2 x Allen screw head (*see right*). The height reductions set is unavailable for the Mini model.



Height reductions set instructions

Loosen the tilt bar from lower frame. The existing threaded rod, the bushing and the Allen screw head is used to mount the special fitting on the tilt bar.



The new threaded rod, the bushing and the Allen screw head is used to mount the special fitting on the lower frame and the wide open part of the new fitting. The new threaded rod is somewhat longer than the red holder to give free access to the special fitting.



CLEANING AND MAINTENANCE

Meywalk®4 can be washed in warm water with detergent but take care not to wash the foam padding on the rear of the trunk support, handlebar and rearstop. With time the painted frame may take on a matt appearance if washed with detergent repeatedly. If so, the frame can be polished with car polish. Follow the instructions of the polish manufacturer. The frame and plastic parts can be disinfected with standard, alcohol-based disinfectants. The foam padding may not be disinfected. It is recommended to regularly check the tightness of all thumbscrews, nuts, bolts and screws. Re-tighten if necessary. Check the parking brake function. When the brakes are on it should not be possible to push the walker. When the brakes are off it should be easy to push the walker. Furthermore, all moving parts should function easily and at a low level of noise. Should you experience any friction noise or squeaking, then have the walker checked by a professional.

RECYCLING

When handing over or recycling the walker all necessary technical documentation must be delivered to the new user to ensure safe handling. The walker must be cleaned, disinfected and checked for damages by a professional before handing over.

DISPOSAL

When your walker is no longer in use and you wish to dispose of it please check the rules and regulations with your local waste management company.

TECHNICAL AND ACCESSORIES

PRE-ASSESSMENT



Ask for the following:

- Inside leg measurement
- Body weight (if possible - *not essential*)
- Chest circumference
- Seat height*
- Trunk support height*



TECHNICAL SPECIFICATIONS

Technical data	MICRO	MINI	SMALL	MEDIUM	LARGE
	WA1202	WA1200	WA1201	WA1203	WA1204
Length	77 cm	80 cm	85 cm	93 cm	110 cm
Outer width	51 cm	56 cm	62 cm	62 cm	68 cm
Inner width	42cm	44 cm	49 cm	50 cm	57 cm
Seat height/inner leg length*	25 - 45cm	28 - 46 cm	44 - 67 cm	60 -84 cm	80 - 104 cm
Trunk support height*	52 - 65 cm	55 - 77 cm	74-99 cm	101 -133 cm	120 - 152 cm
Trunk support circumference (standard size)	70 , 90 cm	70 , 90 cm	70, 90 , 105 cm	70, 90, 105 , 120 cm	105, 120 , 130 cm
Weight (without accessories)	13 kg	20 kg	25 kg	32 kg	34 kg
Max load	60 kWg	80 kg	100 kg	130 kg	130 kg
Colours	Black	Yellow	Green	Red	Black

MATERIALS

Frame	Aluminium	Steel tubing, powder-coated
Fittings	Steel powder-coated	
Upholstery	Polyurethane	
Saddles	Imitation leather	
Wheels	Soft solid rubber tyres on plastic rims with service-free ball bearings	

SPRINGS TECHNICAL SPECIFICATION AND OPTIONS

Weight	10 - 15 kg	15 - 20 kg	20 -50 kg	45 - 65 kg	65 - 80 kg	80 kg	100 kg
Colour	ORANGE	PURPLE	WHITE	YELLOW	BLUE	RED	SILVER
Part no.	WA1232	WA1233	WA1234	WA1235 / WA1237	WA1236 / WA1238	WA1239	WA1240
Standard		Micro, Mini		Small		Medium, Large	
Available on	Micro, Mini	Micro, Mini	Micro, Mini, Small	Small / Medium	Small / Medium, Large	Medium, Large	Medium, Large

MEYWALK®4 ACCESSORIES

Part No.	Description
WA1205	Trunk pad, Small COMPLETE
WA1206	Trunk pad, Medium COMPLETE
WA1207	Trunk pad, Large COMPLETE
WA1208	Trunk pad adjustment set
WA1209	Leg divider, Silver METAL - Micro, Mini and Small
WA1210	Cover for leg divider - Micro, Mini and Small
WA1211	Leg divider, Silver METAL - Medium and Large
WA1212	Cover for leg divider - Medium and Large
WA1213	Leg guides, Silver METAL - Micro and Mini
WA1214	Leg guides, Silver METAL -Small
WA1215	Leg guides, Silver METAL - Medium
WA1216	Leg guides, Silver METAL - Large
WA1241	Leg guides, Black PLASTIC - Micro
WA1242	Leg guides, Black PLASTIC - Mini
WA1243	Leg guides, Black PLASTIC - Small
WA1217	Leg guides, Black PLASTIC - Medium and Large
WA1218	Hip pads COMPLETE
WA1219	Anti-tip support - Micro, Mini, Small and Medium
WA1220	Anti-tip support - Large
WA1223	Comfort saddle including bracket
WA1224	Tray - Mini and Small
WA1225	Tray - Medium and Large
WA1226	Push and drag bar - Mini and Small (For micro WA1244)
WA1227	70 cm - Spare Thoracic Support Ring
WA1228	90 cm - Spare Thoracic Support Ring
WA1229	105 cm - Spare Thoracic Support Ring
WA1230	120 cm - Spare Thoracic Support Ring
WA1231	130 cm - Spare Thoracic Support Ring



Trunk pads

WA1205, WA1206,
WA1207



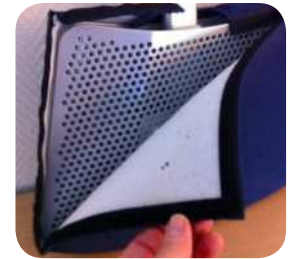
Adjustment set

WA1208



Leg divider

WA1209, WA1211



Leg divider cover

WA1210, WA1212



Leg guides

Silver METAL

WA1213, WA1214,
WA1215, WA1216



Leg guides

Black PLASTIC

WA1241, WA1242,
WA1243, WA1217



Hip pads

Complete

WA1218



Anti-tip support

WA1219, WA1220



Comfort saddle

WA1223



Tray

WA1224, WA1225



Push and drag bar

Mini/small WA1226

Micro WA1244



Thoracic support

WA1227, WA1228,

WA1229, WA1230,

WA1231



MEY4MAN_1



Scan me

Tel: 01531 635388

www.Symmetrikit.com

sales@Symmetrikit.com

The Helping Hand Company

Bromyard Road, Ledbury

Herefordshire HR8 1NS

SYMMETRIKIT
POSTURAL CARE

HH a division of The Helping Hand Company