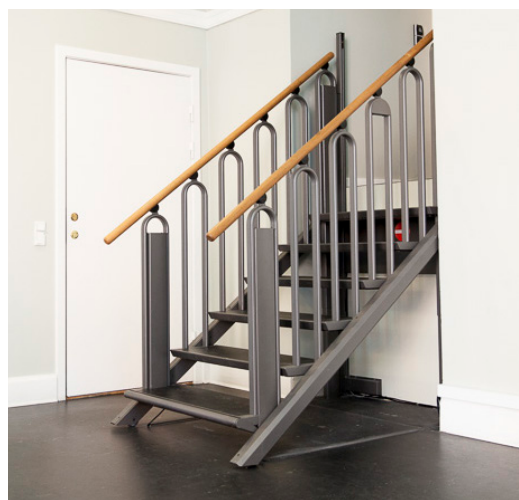
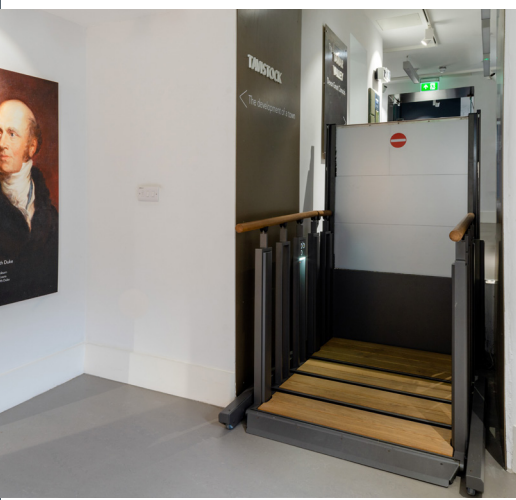


FlexStep



Part M Compliant Platform Lift (certified to EN81-41)

FlexStep is an ingenious space-saving 2-in-1 platform lift solution. It provides both steps and lift in the tightest of spaces. At a touch of a button, the FlexStep transforms from a flight of stairs to a platform lift. It is the perfect access solution for both residential and commercial sectors.

FlexStep

Standard Features

Indoor or outdoor installation
Built-in safety features
Four synchronised actuators
Emergency stop
Upper call station: hold to run (wireless)
Lower call station: hold to run (wireless)
(can be wall mounted or flush in wall)

Optional Features

Dual control on platform (push and hold)
Key switch (school control)
Auto-dialler
Audible alarm
Hand rails and step inserts in different finishes

Specifications

Drive	Actuator system with brushless motors
Capacity	400kg
Speed	0.15m/s
Travel	Dependent on step model (2-6 step model) 240mm – 1250mm

.....

SIZES

Available in different step widths and step heights

.....

LIFTING PLATFORM

Finishes:	Akzo Nobel 900 Sable (standard grey) Any four digit RAL colour on request
-----------	--

.....

ELECTRICAL DETAILS / POWER REQUIREMENT

Supply:	Single phase 5 amp fused spur
---------	-------------------------------

.....