

Professional Health Care Providers are challenged daily with the physical limitations of their elderly, injured and disabled patients

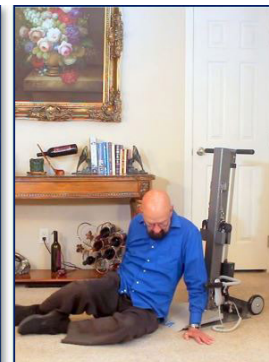
Indeelift can comfortably have you back on your feet in minutes, ensuring your safety, dignity and independence.

Indeelift's HFL-FTS easily lift mobility challenged individuals from the floor to a sitting or standing position after a fall or when getting back up from exercise, therapy, gardening and other activities. For businesses such as assisted living, senior housing and hospice, they allow caregivers to easily and safely recover fallen residents.

Both lifts can be self-operated or operated with the assistance of a helper, safely lifting a person up to 53cm (21") **HFL-300** and 76cm (30") **HFL-400-FTS** from anywhere, to achieve a full standing position.

## SELF-OPERATED

After a fall, the fallen person scoots onto the lift, slides or tilts onto the beveled seat and pushes a button on the wired remote, activating the motor which raises them from the floor to any point that is comfortable for them to stand up.

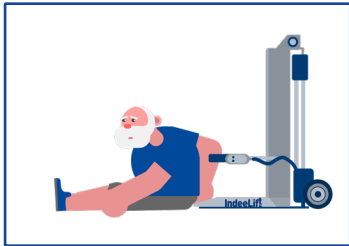


## ASSISTED OPERATION ▲

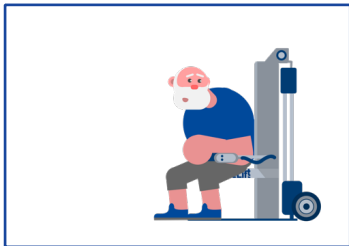
A helper/caregiver wheels the lift to the fallen person and assists them onto the seat, if necessary. The helper pushes a button on the wired remote which raises the fallen person from the floor to a standing position or to a level that allows the fallen person to transfer as required.

With the human floor lift,  
**from IndeeLift,**  
there is no need to call for help

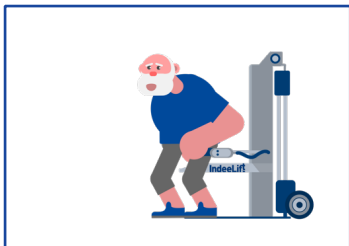
1



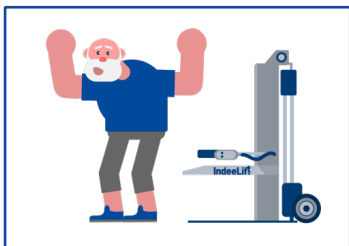
2



3



4



IndeeLift is based in California and Barcelona and has developed a line of human floor lifts to help people get up from the floor while preserving the safety, dignity, and independence of those who need help and their caregivers

[sales@aatgb.com](mailto:sales@aatgb.com) | 01978 82 18 75  
[www.aatgb.com](http://www.aatgb.com)

**IndeeLift®**  
The Human Floor Lift



Preserve your independence  
while staying at home with  
**The People Picker Upper**