

Hygiene & Transfer

Topaz

sitting position

Comfort and safe access to all medical bathtubs

Transfer cart (sitting position)

REF. 5462.00 - 5469.00



The Topaz transfer cart allows a patient in seated position to be transferred to a medical bath, combining comfort, safety and ergonomic use.

REVAL
SUSTAINABLE WELL-BEING

Hygiene & Transfer

Topaz

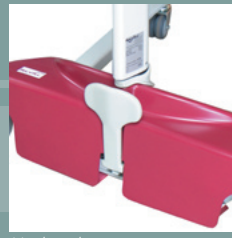
UNIQUE FEATURES



Pictures: Topaz ref. 5462.00 + bathtub Cocoon TS



Electric version

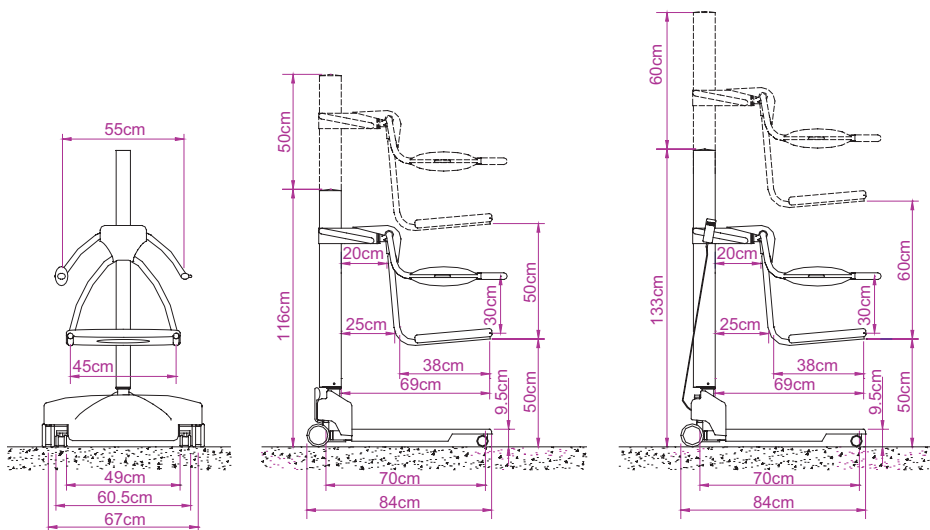


Hydraulic version

- Up/down controls activated by foot (hydraulic version) or by remote control (electric version).
- Seat cover made from moulded polyurethane. = comfort, durability, easy to clean.
- Large lifting range.
- Exceptional lifting capacity. (80 lifts at 130kg)
- 180° tilting armrests.
- Cushion back-rest in moulded polyurethane.
- Submersible parts with Rilsan coating.

Transfer cart (sitting position)

REF. 5462.00 - 5469.00



5472.00

5479.00

DESCRIPTION:

Frame

- Anti-corrosion, grey colour.
- Frame cover in ABS, plum colour.
- 4 guiding castors, 2 with brakes.

Hydraulic version (5462.00)

- Stainless steel hydraulic actuator with aluminium skirt.
- Retractable foot control.

Electric version (5469.00)

- 24V electric jack.
- 2 functions electric hand control.
- Emergency stop button.
- Emergency down button.
- 2x12V rechargeable batteries, 8Ah.
- 24V charger, 1300mA with indicator.
- Capacity at fully charged : 80 lifts at 130kg.

Submersible parts

- Steel structure with watertight coating made of Rilsan.
- Seat cover made of polyurethane foam.
- Cushion backrest with adjustable inclination.
- Safety belt.

SPECIFICATIONS

- Maximum weight of patient : 150 kg
- Lifting range (hydraulic version) : 50 cm
- Lifting range (electric version) : 60 cm
- Unit weight (hydraulic version) : 52 kg
- Unit weight (electric version) : 57 kg

CONFORMITY

- 93/42/EEC (Medical devices Directive)
- EN 10535 (Standard for person lifts)